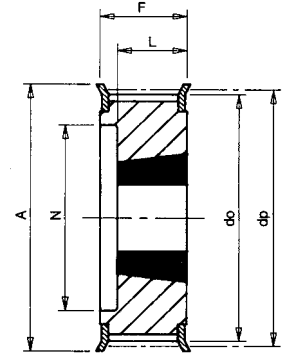


Taper Bore Pulleys for HTD Size 5M & 8M Belts

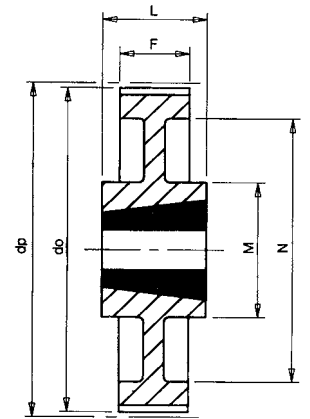
Catalogue No.	No. Teeth Z	Pulley Type	Pitch Circle Dia. dp	Taper Bush Ref.	Max. Bore d	Outside Diameter do	Flange Diameter A	Pulley Width F	Bore Length L	Hub Diameter M	Rim Diameter N	Approx Weight kg
5mm Pitch Pulleys for 15mm Wide Belt Ref. 5M15												
34-5M-15	34	9F	54.11	1008	25	53.0	57	22	22	-	-	0.23
36-5M-15	36	9F	57.30	1108	28	56.2	60	22	22	-	-	0.23
38-5M-15	38	9F	60.48	1108	28	59.4	66	22	22	-	-	0.29
40-5M-15	40	9F	63.66	1108	28	62.5	70	22	22	-	-	0.38
44-5M-15	44	9F	70.03	1108	28	68.9	75	22	22	-	-	0.48
48-5M-15	48	8F	76.39	1210	32	75.3	83	22	25	59	-	0.50
56-5M-15	56	8F	89.13	1210	32	87.9	93	22	25	70	-	0.66
64-5M-15	64	8F	101.86	1210	32	100.7	106	22	25	80	-	0.85
72-5M-15	72	8	114.59	1610	42	113.5	-	22	25	92	-	1.25
80-5M-15	80	8	127.32	1610	42	126.2	-	22	25	92	-	1.70
90-5M-15	90	8	143.24	1610	42	142.1	-	22	25	92	-	2.25
112-5M-15	112	8	178.25	2012	50	177.1	-	20	32	110	-	3.20
136-5M-15	136	7	216.45	2012	50	215.3	-	20	32	110	199	3.60
8mm Pitch Pulleys for 20mm Wide Belt Ref. 8M20												
22-8M-20	22	5F	56.02	1108	28	54.7	60	28	22	-	37	0.26
24-8M-20	24	5F	61.12	1108	28	59.8	66	28	22	-	44	0.30
26-8M-20	26	5F	66.21	1108	28	64.9	70	28	22	-	45	0.36
28-8M-20	28	5F	71.30	1108	28	70.1	75	28	22	-	50	0.44
30-8M-20	30	5F	76.39	1108	28	75.1	83	28	22	-	58	0.53
32-8M-20	32	5F	81.49	1610	42	80.2	87	28	25	-	63	0.42
34-8M-20	34	5F	86.58	1610	42	85.2	91	28	25	-	64	0.55
36-8M-20	36	5F	91.67	1610	42	90.3	97	28	25	-	68	0.68
38-8M-20	38	5F	96.77	1610	42	95.4	102	28	25	-	72	0.80
40-8M-20	40	5F	101.86	1610	42	100.5	106	28	25	-	76	1.00
44-8M-20	44	8F	112.05	2012	50	110.7	120	28	32	93	-	1.20
48-8M-20	48	8F	122.23	2012	50	120.9	128	28	32	96	-	1.60
56-8M-20	56	8F	142.60	2012	50	141.2	150	28	32	110	-	2.40
64-8M-20	64	11F	162.97	2012	50	161.6	168	28	32	110	137	2.70
72-8M-20	72	11F	183.35	2012	50	182.0	192	28	32	110	158	3.30
80-8M-20	80	11	203.72	2012	50	202.4	-	28	32	110	180	3.50
90-8M-20	90	11	229.18	2012	50	227.8	-	28	32	110	204	3.65
8mm Pitch Pulleys for 30mm Wide Belt Ref. 8M30												
22-8M-30	22	5F	56.02	1108	28	54.7	60	38	22	-	37	0.32
24-8M-30	24	5F	61.12	1108	28	59.8	66	38	22	-	44	0.38
26-8M-30	26	5F	66.21	1108	28	64.9	70	38	22	-	44	0.45
28-8M-30	28	5F	71.30	1210	32	70.1	75	38	25	-	50	0.50
30-8M-30	30	9F	76.39	1615	42	75.1	83	38	38	-	-	0.55
32-8M-30	32	9F	81.49	1615	42	80.2	87	38	38	-	-	0.59
34-8M-30	34	9F	86.58	1615	42	85.2	91	38	38	-	-	0.77
36-8M-30	36	9F	91.67	1615	42	90.3	97	38	38	-	-	0.96
38-8M-30	38	9F	96.77	1615	42	95.4	102	38	38	-	-	1.15
40-8M-30	40	9F	101.86	1615	42	100.5	106	38	38	-	-	1.34
44-8M-30	44	13F	112.05	2012	50	110.7	120	38	32	-	86	1.33
48-8M-30	48	13F	122.23	2012	50	120.9	128	38	32	-	90	1.78
56-8M-30	56	13F	142.60	2012	50	141.2	150	38	32	-	110	3.76
64-8M-30	64	8F	162.97	2517	60	161.6	168	38	45	125	-	4.20
72-8M-30	72	11F	183.35	2517	60	182.0	192	38	45	125	158	4.30
80-8M-30	80	11	203.72	2517	60	202.4	-	38	45	125	180	4.60
90-8M-30	90	11	229.18	2517	60	227.8	-	38	45	125	204	5.00
112-8M-30	112	11	285.21	2517	60	283.8	-	38	45	125	254	6.20
144-8M-30	144	11	366.69	2517	60	365.3	-	38	45	125	336	9.00
8mm Pitch Pulleys for 50mm Wide Belt Ref. 8M50												
28-8M-50	28	13F	71.30	1210	32	70.1	75	60	25	-	50	0.60
30-8M-50	30	5F	76.39	1615	42	75.1	83	60	38	-	58	0.65
32-8M-50	32	5F	81.49	1615	42	80.2	87	60	38	-	62	0.82
34-8M-50	34	5F	86.58	1615	42	85.2	91	60	38	-	65	1.06
36-8M-50	36	5F	91.67	1615	42	90.3	97	60	38	-	68	1.30
38-8M-50	38	5F	96.77	1615	42	95.4	102	60	38	-	72	1.60
40-8M-50	40	13F	101.86	2012	50	100.5	106	60	32	-	82	1.71
44-8M-50	44	13F	112.05	2012	50	110.7	120	60	32	-	91	1.78
48-8M-50	48	13F	122.23	2012	50	120.9	128	60	32	-	95	2.30
56-8M-50	56	13F	142.60	2517	60	141.2	150	60	45	-	116	3.40
64-8M-50	64	13F	162.97	2517	60	161.6	168	60	45	-	137	5.00
72-8M-50	72	12F	183.35	2517	60	182.0	192	60	45	125	158	6.70
80-8M-50	80	13	203.72	3020	75	202.4	-	60	51	-	180	8.80
90-8M-50	90	12	229.18	3020	75	227.8	-	60	51	170	204	10.00
112-8M-50	112	12	285.21	3020	75	283.8	-	60	51	170	260	12.00
144-8M-50	144	12	366.69	3020	75	365.3	-	60	51	170	341	15.20
168-8M-50	168	7	427.81	3525	90	426.4	-	60	65	198	402	17.50
192-8M-50	192	7	488.92	3525	90	487.6	-	60	65	198	460	24.00
8mm Pitch Pulleys for 85mm Wide Belt Ref. 8M85												
34-8M-85	34	13F	86.58	1615	42	85.2	91	95	38	-	65	1.43
36-8M-85	36	13F	91.67	1615	42	90.3	97	95	38	-	68	1.87
38-8M-85	38	13F	96.77	1615	42	95.4	102	95	38	-	72	2.20
40-8M-85	40	13F	101.86	2012	50	100.5	106	95	32	-	82	1.80
44-8M-85	44	13F	112.05	2012	50	110.7	120	95	32	-	91	2.30
48-8M-85	48	13F	122.23	2517	60	120.9	128	95	45	-	100	2.66
56-8M-85	56	13F	142.60	2517	60	141.2	150	95	45	-	117	4.45
64-8M-85	64	13F	162.97	2517	60	161.6	168	95	45	-	137	6.20
72-8M-85	72	13F	183.35	3020	75	182.0	192	95	51	-	158	8.00
80-8M-85	80	13	203.72	3020	75	202.4	-	95	51	-	180	10.00
90-8M-85	90	12	229.18	3020	75	227.8	-	95	51	170	204	10.80
112-8M-85	112	12	285.21	3020	75	283.8	-	95	51	170	260	15.00
144-8M-85	144	12	366.69	3525	90	365.3	-	95	65	198	336	20.00
168-8M-85	168	12	427.81	3525	90	426.4	-	95	65	198	395	22.00
192-8M-85	192	12	488.92	3525	90	487.6	-	95	65	198	455	26.00

Pulley Types

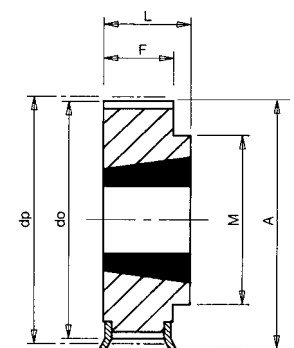
The pulley types referred to in tables are as drawings following. Suffix 'F' indicates pulley has flanges. Pulleys below dividing lines in tables are manufactured in Cast Iron, and pulleys over 300mm diameter generally have lightening holes in web.



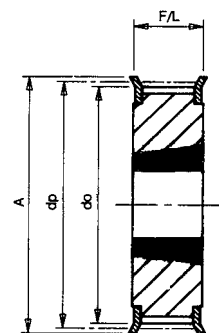
Type 5F



Type 7



Type 8/8F



Type 9F